

Waves ISP

Process and Services



Who?



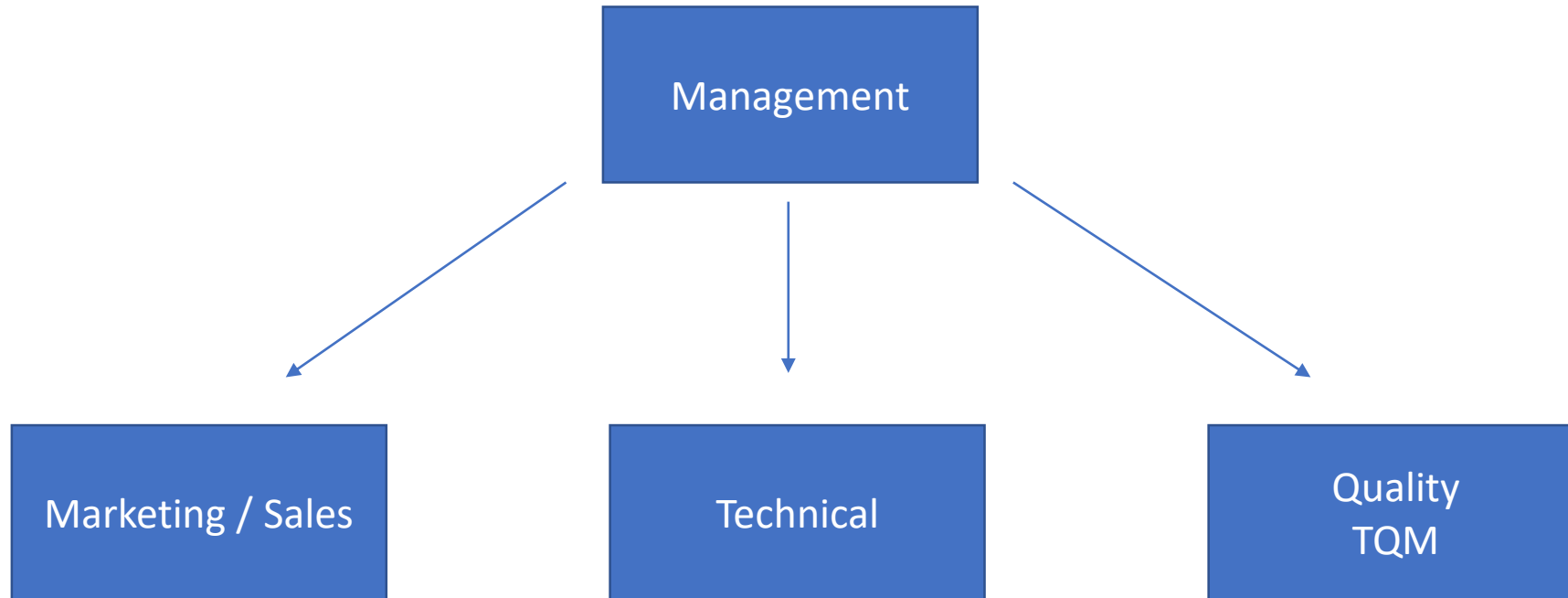
- **One of Telsa Group Companies which focus on Internet Services**
- **Waves find the Solutions for the best Internet connection based in all available Fixed and Wireless technologies**
- **Waves provide full ICT solution's starting from solution design ending by solution project implementation**

Products & Services

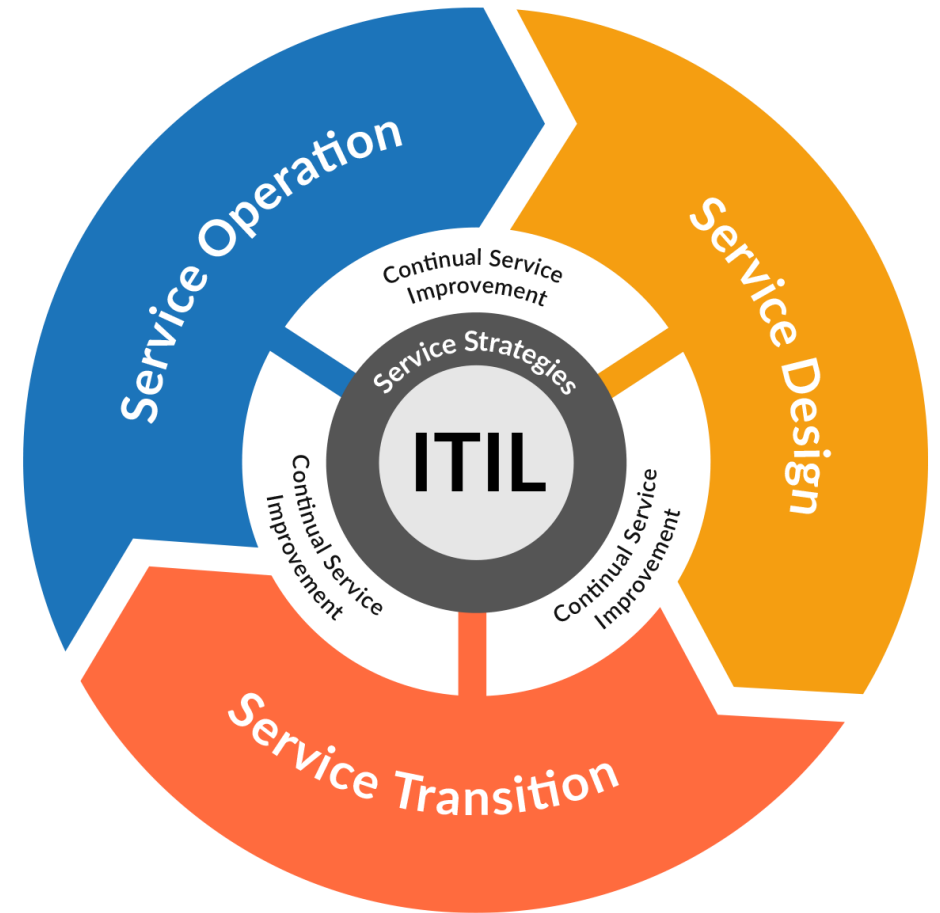
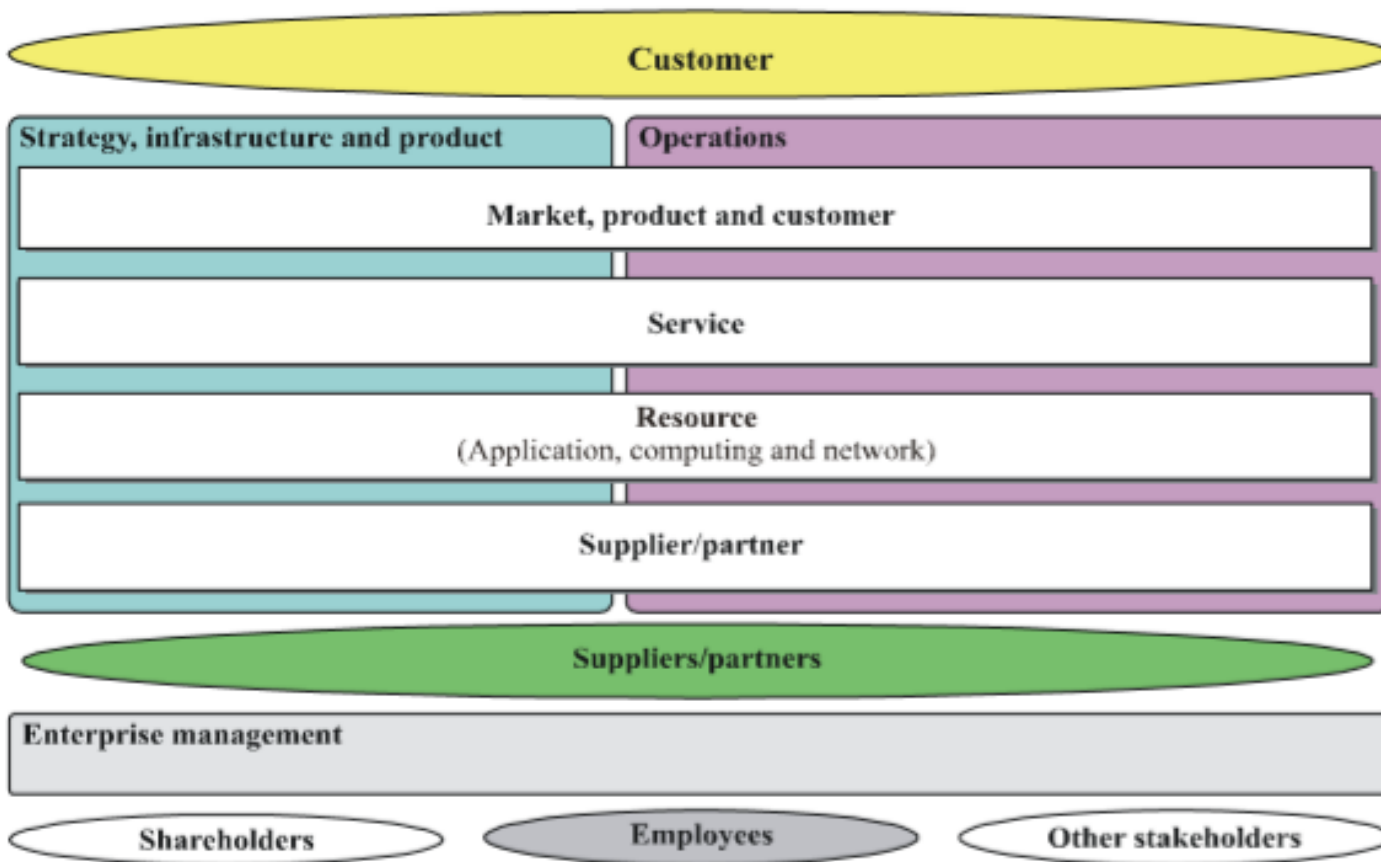


- ADSL for Individual
- ADSL for Small Business
- Hotspot
- Leased Lines
- IPTV solutions
- Web based application development and Hosting
- Intranet solutions (physical and software)

Main Organization Departments



Customized business process framework ITU-T M3050 - ITIL V3



Main Management interface



Applying eTOM frame Work and ITIL Processes



To Develop our organization Business process and increase the resources efficiency we apply ERP System includes the following modules :

- **Project Module** include managing and new project
- **HR** Module includes Payroll system
- **CRM** Module includes customer services center, E marketing, Sales force management, After sales support and follow-up
- **Billing** and accounting Module include Procurement, logistics, accounting, customer billing
- **POS** modules include pos interfaces to apply and activation with full automated process

Project Module



Tasks

CREATE IMPORT

Search...

Filters Group By Favorites

New	To Do	In Progress	Done	Cancelled	
<p>Integrate Modules Website for Sales & WMS</p> <p>★ 🕒 </p>	<p>Document history management Research & Development</p> <p>★ 🕒 </p>	<p>Internal testing + Software Install Website for Sales & WMS</p> <p>★ 🕒 </p>	<p>Deploy and review on live system E-Learning Integration</p> <p>★ 🕒 😊 </p>	<p>Set target for all departments E-Learning Integration</p> <p>★ 🕒 </p>	Add new Column
<p>Dataflow Design E-Learning Integration</p> <p>★ 🕒 </p>	<p>Improve+clean code and functionality Research & Development</p> <p>★ 🕒 </p>	<p>Social network integration Research & Development</p> <p>★ 🕒 </p>	<p>User Interface design E-Learning Integration</p> <p>● Usability</p> <p>★ 🕒 😊 </p>	<p>Usability review Website Design Templates</p> <p>● Usability</p> <p>☆ 🕒 </p>	
<p>New portal system Research & Development</p> <p>● Experiment</p> <p>☆ 🕒 🚫 </p>	<p>Prepare Requirements Document Website for Sales & WMS</p> <p>☆ 🕒 </p>	<p>Design Use Cases E-Learning Integration</p> <p>★ 🕒 </p>	<p>Modifications asked by the customer Data Import/Export Plugin</p> <p>● Contact's suggestion</p> <p>★ 🕒 😊 </p>	<p>Data Export flow Data Import/Export Plugin</p> <p>☆ 🕒 </p>	
<p>Unit Testing Data Import/Export Plugin</p> <p>☆ 🕒 </p>	<p>Create new components Website Design Templates</p> <p>☆ 🕒 </p>	<p>User interface improvements Research & Development</p> <p>● Feature request ● Usability</p> <p>★ 🕒 </p>	<p>Customer analysis + Architecture Data Import/Export Plugin</p> <p>☆ 🕒 </p>	<p>Make SRS Website for Sales & WMS</p> <p>☆ 🕒 </p>	
<p>Data import + Doc Data Import/Export Plugin</p> <p>☆ 🕒 </p>	<p>Develop module for Sale Management Website for Sales & WMS</p> <p>01/19/2018</p> <p>● Feature request</p> <p>☆ 🕒 </p>	<p>Integration of core components E-Learning Integration</p> <p>★ 🕒 </p>	<p>Budget Planning Website for Sales & WMS</p> <p>01/24/2018</p> <p>☆ 🕒 😊 </p>	<p>Develop module for Warehouse Website for Sales & WMS</p> <p>01/30/2018</p> <p>● Feature request</p> <p>☆ 🕒 </p>	

HR Module



Employees

Search...

CREATE IMPORT

Filters Group By Favorites

1-24 / 24

Antoine Langlais
Chief Technical Officer
Trainer Employee
Building 1, Second Floor
antoine@odoo.com
+3281813700
FOLLOWING

Ashley Presley
Human Resources Manager
Employee
Building 1, Second Floor
ashley@odoo.com
+3281813700
FOLLOWING

David Samson
Experienced Developer
Employee
Building 1, Second Floor
david@odoo.com
+3281813700
FOLLOWING

Demo User
Experienced Developer
Employee
Building 1, Second Floor
demo@yourcompany.example.com
+3281813700
FOLLOWING

Famke Jenssens
Marketing and Community Manager
Sales Employee
Building 1, Second Floor
famke@odoo.com
+3281813700
FOLLOWING

Hans Anders
Experienced Developer
Building 1, Second Floor
+3282823500
FOLLOWING

Jack Macklin
Experienced Developer
Employee
Building 1, Second Floor
jack@odoo.com
+3281813700
FOLLOWING

Jan Van Eyck
Experienced Developer
Building 1, Second Floor
jve@odoo.com
+3282823500
FOLLOWING

Jean-Pierre Carnaud
Consultant
Building 1, Second Floor
jep@odoo.com
+3282823500
FOLLOWING

Jimmy Kosikin
Consultant
Employee Consultant
Building 1, Second Floor
jimmy@odoo.com
+3281813700
FOLLOWING

John Doe
Marketing and Community Manager
Building 1, Second Floor
jod@odoo.com
+3282823500
FOLLOWING

John Smith
Experienced Developer
Employee
Building 1, Second Floor
john@odoo.com
+3281813700
+32486571630
FOLLOWING

CRM Module



New	Qualified	Proposition	Negotiation	Won
<p>\$69,600</p> <ul style="list-style-type: none">Interest in your Graphic Design Project Software \$ 24,000.00, AgrolaitScript to Import external data Services \$ 5,600.00, CamptocampPlan to buy 60 keyboards Product \$ 40,000.00	<p>\$61,000</p> <ul style="list-style-type: none">Trainee's training plan in your Organization Information Training \$ 35,000.00, Delta PCPricing Information of Services Services Information \$ 1,000.00Plan to buy RedHat servers Product \$ 25,000.00, Agrolait	<p>\$24,500</p> <ul style="list-style-type: none">Would appreciate more information about your products Software \$ 11,000.00, AgrolaitNeed to customize the solution Information \$ 4,500.00"Resource Planning" project development Consulting \$ 9,000.00, Delta PC	<p>\$77,000</p> <ul style="list-style-type: none">Interest in your customizable Pcs Product \$ 15,000.00, CamptocampNeed 20 Days of Consultancy Consulting \$ 60,000.00Want to subscribe to your online solution Services \$ 2,000.00, Think Big	<p>\$25,600</p> <ul style="list-style-type: none">Interest in your products Software \$ 2,000.00, AgrolaitInterest in your Partnership Product Information Other \$ 19,800.00, China ExportNeed new design for my website Design \$ 3,800.00, Delta PC

Need 20 Days of Consultancy
Consulting
\$ 60,000.00

Billing & Accounting



Accounting

Dashboard Sales Purchases Adviser Reporting Configuration

📞 11 24 Administrator

Accounting Dashboard

Favorites

Filters Group By Favorites 1-5 / 5

Customer Invoices

Sale

NEW INVOICE

2 Invoices to validate
17 Awaiting payments

\$ 6049.35
\$ 479,836.99

Period	Activity
Past	Low
21-27 Jan	Medium
This Week	High
4-10 Feb	Medium
11-17 Feb	Medium
Future	Low

Vendor Bills

Purchase

NEW BILL

1 Draft bills
7 Payments to do

\$ 1450.00
\$ 15,260.80

Period	Activity
Past	High
21-27 Jan	Medium
This Week	Medium
4-10 Feb	Low
11-17 Feb	Medium
Future	Low

Bank

Bank

RECONCILE 4 ITEMS

Balance in GL \$ 1,028.78
Latest Statement \$ 8,998.20
Difference \$ 7,969.42

Online Synchronization New Statement
Import Statement

Date	Balance
5 Jan	High
10 Jan	Low
15 Jan	Medium
20 Jan	Medium
25 Jan	Low

Cash

Cash

RECONCILE 1 ITEMS

Balance in GL \$ 219,500.00
Latest Statement \$ 65,050.00
Difference \$ -154,450.00

New Transactions

Date	Balance
5 Jan	Low
10 Jan	Medium
15 Jan	Medium
20 Jan	Low
25 Jan	Low

POS management



Dashboard

Users

Managers

Profiles

Cards

NAS

Reports

Tools

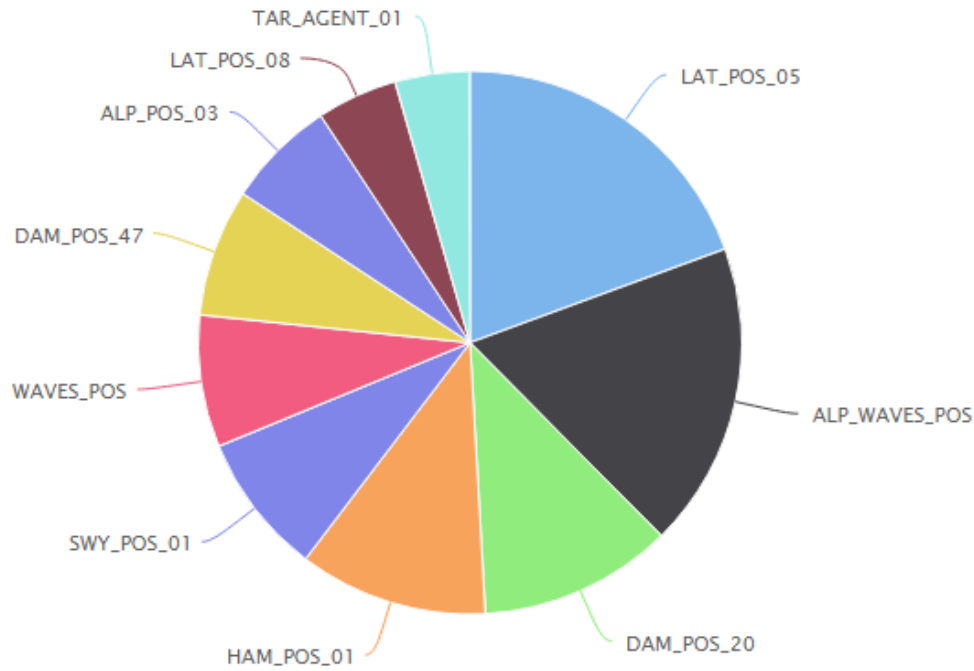


Managers Report

Overview

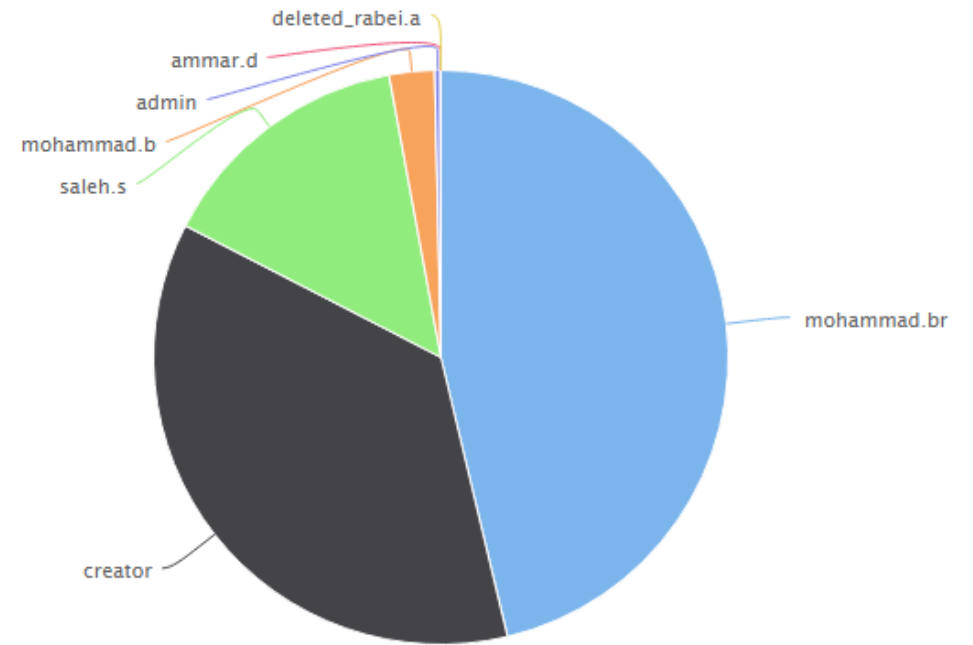
GPS

Most Active Managers



Having Most Active Users

Top Managers by Registrations



Having Most Expired Users



Q&A